

Concrete & Masonry Fixings



Zamac Nail In Anchors

Zinc

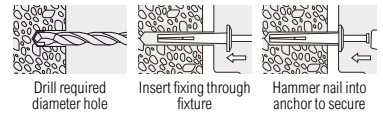


70KG

Technical Data

Substrate	Concrete $\geq 25N/mm^2$
Size \varnothing (mm)	6.0
Drill Hole \varnothing (mm)	6.0
Fixture Clearance Hole \varnothing (mm)	6.5
Min. Embedment Depth (mm)	25
Min Drill Hole Depth (mm)	35
Rec. Tensile Load (kN)	0.70
Max Rec. Load (kg)	70

A rapid light duty hammer-set anchor for attaching sheet metal, plastic or wood to concrete or masonry.
Note: Not recommended for overhead applications



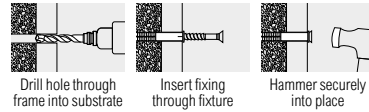
Product Code	Size (mm)	Max. Fixture Thickness (mm)	Pack Qty (pcs)	Carton Qty (packs)	Pallet Qty (packs)
BOX					
0630ZNA	6.0 x 30	5	100	10	300
0640ZNA	6.0 x 40	15	100	10	300
0650ZNA	6.0 x 50	25	100	8	240
0665ZNA	6.0 x 65	40	100	8	240

NAA01

Nylon Hammer Fixings

Zinc

A light duty hammer-set through fixing for brick, block, stone, masonry and concrete.



17 - 55KG

Technical Data

Substrate	Fletton Brick 30 N/mm ²			Cheshire Brick 45 N/mm ²			Class B Eng. Brick 75 N/mm ²			Concrete $\geq 25N/mm^2$		
	5.0	6.0	8.0	5.0	6.0	8.0	5.0	6.0	8.0	5.0	6.0	8.0
Size \varnothing (mm)	5.0	6.0	8.0	5.0	6.0	8.0	5.0	6.0	8.0	5.0	6.0	8.0
Drill Hole \varnothing (mm)	5.0	6.0	8.0	5.0	6.0	8.0	5.0	6.0	8.0	5.0	6.0	8.0
Embedment Depth (mm)	25	25	40	25	25	40	25	25	40	25	25	40
Min. Drill Hole Depth (mm)	35	35	50	35	35	50	35	35	50	35	35	50
Rec. Tensile Load (kN)	0.19	0.21	0.48	0.21	0.27	0.55	0.17	0.28	0.52	0.19	0.22	0.49

Product Code	Size (mm)	MFT (mm)	Driver Bit Size	Pack Qty (pcs)	Carton Qty (packs)	Pallet Qty (packs)
5003OHF	5.0 x 30	5	PZ2	200	20	540
5005OHF	5.0 x 50	25	PZ2	200	10	288
6004OHF	6.0 x 40	15	PZ2	200	10	432
6005OHF	6.0 x 50	25	PZ2	200	10	288
6006OHF	6.0 x 60	35	PZ2	200	10	288
6007OHF	6.0 x 70	45	PZ2	200	10	288
6008OHF	6.0 x 80	55	PZ2	200	10	288
8006OHF	8.0 x 60	20	PZ3	100	20	192
8008OHF	8.0 x 80	40	PZ3	100	10	192
8010OHF	8.0 x 100	60	PZ3	100	10	192
8012OHF	8.0 x 120	80	PZ3	100	10	144
8014OHF	8.0 x 140	100	PZ3	100	10	144

NHFD1

Product Code	Size (mm)	MFT (mm)	Driver Bit Size	Pack Qty (pcs)	Carton Qty (packs)	Pallet Qty (packs)
6004OHFB	6.0 x 40	15	PZ2	135	5	600
6006OHFB	6.0 x 60	35	PZ2	100	5	600
6008OHFB	6.0 x 80	55	PZ2	80	5	600
8010OHFB	8.0 x 100	60	PZ3	40	5	600

BAG27

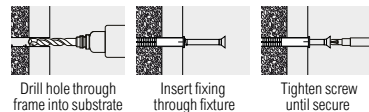
Product Code	Size (mm)	MFT (mm)	Driver Bit Size	Pack Qty (pcs)	Carton Qty (packs)	Pallet Qty (packs)
6004OHFP	6.0 x 40	15	PZ2	10	5	-
6006OHFP	6.0 x 60	35	PZ2	10	5	-
6008OHFP	6.0 x 80	55	PZ2	10	5	-
8010OHFP	8.0 x 100	60	PZ3	8	5	-

PAK39

Nylon Frame Fixings

Zinc

A versatile and reliable fixing for attaching to brick, block, stone, masonry and concrete.



20 - 70KG

Technical Data

Substrate	Fletton Brick 30N/mm ²		Cheshire Brick 45N/mm ²		Class B Eng. Brick 75N/mm ²		Concrete Block 7N/mm ²		Concrete $\geq 25N/mm^2$	
	8.0	10	8.0	10	8.0	10	8.0	10	8.0	10
Size \varnothing (mm)	8.0	10	8.0	10	8.0	10	8.0	10	8.0	10
Drill Hole (mm)	8.0	10	8.0	10	8.0	10	8.0	10	8.0	10
Min. Embedment Depth (mm)	40	50	40	50	40	50	40	50	40	50
Min. Drill Hole Depth (mm)	50	60	50	60	50	60	50	60	50	60
Rec. Tensile Load (kN)	0.25	0.46	0.44	0.65	0.43	0.38	0.20	0.24	0.50	0.70

Product Code	Size (mm)	MFT (mm)	Driver Bit Size	Pack Qty (pcs)	Carton Qty (packs)	Pallet Qty (packs)
0808ONFF	8.0 x 80	40	PZ3	100	8	192
0810ONFF	8.0 x 100	60	PZ3	100	8	144
0812ONFF	8.0 x 120	80	PZ3	100	8	144
1008ONFF	10.0 x 80	30	PZ3	100	4	144
1010ONFF	10.0 x 100	50	PZ3	100	4	192
1012ONFF	10.0 x 120	70	PZ3	100	4	192
1014ONFF	10.0 x 140	90	PZ3	100	4	96
1016ONFF	10.0 x 160	110	PZ3	100	4	96

NFF01

Product Code	Size (mm)	MFT (mm)	Driver Bit Size	Pack Qty (pcs)	Carton Qty (packs)	Pallet Qty (packs)
0808ONFFB	8.0 x 80	40	PZ3	50	5	600
0810ONFFB	8.0 x 100	60	PZ3	40	5	600
1010ONFFB	10.0 x 100	50	PZ3	30	5	600
1012ONFFB	10.0 x 120	70	PZ3	25	5	600
1014ONFFB	10.0 x 140	90	PZ3	20	5	600
1016ONFFB	10.0 x 160	110	PZ3	15	5	600

BAG28

Product Code	Size (mm)	MFT (mm)	Driver Bit Size	Pack Qty (pcs)	Carton Qty (packs)	Pallet Qty (packs)
0808ONFFP	8.0 x 80	40	PZ3	5	5	-
0810ONFFP	8.0 x 100	60	PZ3	4	5	-
1010ONFFP	10.0 x 100	50	PZ3	3	5	-
1012ONFFP	10.0 x 120	70	PZ3	2	5	-
1014ONFFP	10.0 x 140	90	PZ3	2	4	-
1016ONFFP	10.0 x 160	110	PZ3	2	5	-

PAK40